



Smart Waste Management System



Future-Ready Solutions
for Modern Cities



Introducing AdIER: Smart Waste Management System

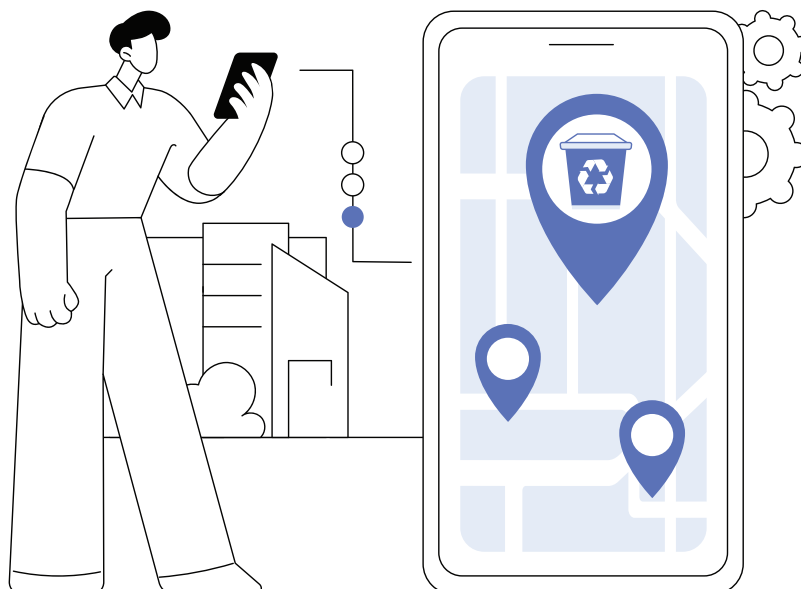
Imagine a city where waste collection runs like clockwork, driven by an intelligent digital brain that keeps everything smooth and efficient—that's exactly what AdIER delivers. It's a user-intuitive platform designed to assist organizations, local authorities, and waste service providers manage every step of their operations in a **smart, innovative, cost-effective, and environmentally** conscious way.

AdIER integrates **GPS, smart sensors, analytics, and cloud tech** to streamline modern waste management. It handles everything, from collection and sorting to compliance and finance, in one unified system. All movements are recorded, enabling end-to-end tracking from pickup to final disposal.

Through its powerful cloud-based interface, users can configure, monitor, and plan daily operations with ease. A dynamic digital map shows real-time bin status, including capacity, waste type, last measurement, GPS location, schedules, performance metrics, and driver activity. Smoothly integrated with AdIER, it connects **IoT devices, RFID authentication, and advanced geo-location tools** to give you full visibility of waste management operations.

With smart sensor-enabled bins, you can monitor fill levels in real time, receive instant alerts, and optimize routes to ensure timely, efficient, and compliant collections.

The result? Greater **transparency**, improved **efficiency**, full **regulatory compliance**, and a cleaner and greener city!





Move beyond outdated systems.

Embrace a smart, sustainable **waste management** solution.

Key Features



Task Automation



Collection Schedule



Centralized Enquiry Management



Manifest Creation



Quotation Management



Tracking and Record-Keeping



Customer Order / Contracts



Service Ticket



Vehicle Allocation



Invoice Creation for Excess Weight



Route Scheduling & Optimization



Intuitive Dashboard



Complete Fleet Management



Compliance Tracking



Customer Management



Intuitive Analytics Dashboards



Powered by **adler**

AdIER is a robust Enterprise Resource Planning (ERP) framework designed to support businesses of all sizes, from single entities to multi-location enterprises. With comprehensive functionalities, an intuitive interface, and rapid implementation, it offers a cost-effective solution for complete business management. With both cloud-based and on-premise deployment options, AdIER easily adapts to diverse organizational needs—whether you're running a single-location company or managing a multi-location network. Its rich feature set, seamless integration, and low ownership cost make it a smart choice for businesses looking to take full control of their operations.



AdIER Standard

Tailored for small to medium-sized organizations with defined processes and departmental workflows, this version supports integrated operations across teams, enabling smoother collaboration and greater efficiency.







AdIER Enterprise

A powerful, feature-rich solution built for large and complex enterprises. With extended modules and over a thousand built-in reports, it delivers in-depth control, customization, and insights across every aspect of business operations.

One ERP.
20+ Industries.
Infinite Possibilities.



Get in touch!

-  Call: +974 5583 7445
-  Email: sales@anvininfo.com
-  P.O. Box: 11824, Doha, Qatar
-  Visit: www.anvininfo.com